



TEURLINGS

CATHOLIC HIGH SCHOOL

TO CHANNEL HIS SPIRIT

2024-2025

College Handbook

WHAT'S INSIDE?

- COLLEGE DIRECTORY
- ADMISSION REQUIREMENTS
- COLLEGE APPLICATION PROCESS
- VISITING COLLEGES
- SCHOLARSHIPS
- FINANCIAL AID
- TOPS
- MUCH, MUCH MORE....



COMMUNION ~ TRUTH ~ VIRTUE ~ MERCY

QUESTIONS

ANNA PROCTOR
SENIOR COUNSELOR
337.235.5711 EXT. 108
APROCTOR@TCHS.NET

[Read More](#)

TABLE OF CONTENTS

PAGE 3.....	COLLEGE/UNIVERSITY DIRECTORY
PAGE 4.....	COLLEGE/UNIVERSITY DIRECTORY
PAGE 5.....	VISITING COLLEGES
PAGE 6.....	UL-LAFAYETTE ADMISSIONS REQUIREMENTS
PAGE 7.....	LSU ADMISSIONS REQUIREMENTS
PAGE 8.....	HOW DO COLLEGES MAKE ADMISSIONS DECISIONS?
PAGE 9.....	WHICH WAY TO APPLY?
PAGE 10.....	THE APPLICATION PROCESS
PAGE 11.....	WHO DOES WHAT?
PAGE 12.....	USING SCOIR
PAGE 13.....	SCHOLARSHIPS
PAGE 15.....	FINANCIAL AID
PAGE 16.....	STANDARDIZED TESTING
PAGE 17.....	TOPS PROGRAM
PAGE 18.....	NCAA ELIGIBILITY CENTER
PAGE 19.....	QUICK TIPS
PAGE 21.....	SAMPLE STUDENT RESUME

LOUISIANA COLLEGE/UNIVERSITY

Baton Rouge Community College
5310 Florida Boulevard
Baton Rouge, LA 70806
(225) 216-8700
www.mybrcc.edu

Bossier Parish Community College
2719 Airline Drive at I-220
Bossier City, LA 71111
(318) 746-9851
www.bpcc.edu

Centenary College of Louisiana
2911 Centenary Boulevard
Shreveport, LA 71134-1188
1-800-234-4448
www.centenary.edu

Delgado Community College
615 City Park Avenue
New Orleans, LA 70119-4399
(504) 483-4004
www.dcc.edu

Dillard University
2601 Gentilly Boulevard
New Orleans, LA 70122
(504) 816-4670
www.dillard.edu

Grambling State University
P.O. Box 864
Grambling, LA 71245
1-888-863-3655
www.gram.edu

Louisiana College
1140 College Drive
Pineville, LA 71360
(318) 487-7259
www.lacollege.edu

Louisiana State University
1146 Pleasant Hall
Baton Rouge, LA 70803-2802
(225) 578-1175
www.lsu.edu

Louisiana State University-Alexandria
8100 Highway 71 South
Alexandria, LA 71302-9121
(318) 473-6417
www.lsua.edu

Louisiana State University-Eunice
P.O. Box 1129
Eunice, LA 70535
(337) 550-1329
www.lsu.edu

Louisiana State University-Shreveport
One University Place
Shreveport, LA 71115
(318) 797-5249
www.lsus.edu

Louisiana State University-Medical Center
433 Bolivar Street
New Orleans, LA 70112-2223
(504) 568-4829
www.medschool.lsuhs.edu

Louisiana State University
School of Dentistry
1100 Florida Boulevard
New Orleans, LA 70119
www.lsusd.lsuhs.edu

Louisiana State University
School of Nursing
1900 Gravier Street
New Orleans, LA 70112-2262
www.nursing.lsuhs.edu

Louisiana Tech University
P.O. Box 3178-T.S.
Ruston, LA 71272
(318) 257-3036
www.latech.edu

Loyola University New Orleans
6363 St. Charles Avenue- Campus Box 18
New Orleans, LA 70118-6143
(504) 865-3240
www.loyno.edu

Directory

LOUISIANA COLLEGE/UNIVERSITY

McNeese State University
P.O. Box 92495
Lake Charles, LA 70609-2495
1-800-622-3352
www.mcneese.edu

Nicholls State University
P.O. Box 2004
Thibodaux, LA 70310
1-877-NICHOLLS
www.nicholls.edu

University of Louisiana at Monroe
700 University Avenue
Monroe, LA 71209
(318) 342-5430
www.ulm.edu

Northwestern State University
Office of Admissions and Recruiting
Natchitoches, LA 71497
1-800-426-3754
www.nsula.edu

Nunez Community College
3710 Paris Road
Chalmette, LA 70034
(504) 680-2467
www.nunez.edu

University of Holy Cross
4123 Woodland Drive
New Orleans, LA 70131-7399
(504) 398-2175
www.uhcno.edu

Southeastern Louisiana University
SLU 10752
Hammond, LA 70402-0752
1-800-222-SELU
www.southeastern.edu

Southern University-Baton Rouge
P.O. Box 9901
Baton Rouge, LA 70813
(225) 771-2430
www.subr.edu

Southern University at New Orleans
6400 Press Drive
New Orleans, LA 70126
(504) 266-5314
www.suno.edu

Tulane University
6823 St. Charles Avenue
New Orleans, LA 70118
1-800-873-9283
www.tulane.edu

University of New Orleans
Administration Building, Room 103 Lakefront
New Orleans, LA 70148
(504) 280-6595
www.uno.edu

University of Louisiana at Lafayette
P.O. Box 41210 or 44652
Lafayette, LA 70504-1208
1-800-752-6553
www.louisiana.edu

Xavier University
#1 Drexel Drive Box 132-C
New Orleans, LA 70125
(504) 483-7388
www.xula.edu

Franciscan Missionaries of Our Lady
University
5345 Brittany Drive
Baton Rouge, LA 70808
(225) 768-1700
www.franu.edu

South Louisiana Community College
320 Devalcourt Street
Lafayette, LA 70506
(337) 984-3684 ext. 114
www.solacc.edu

Louisiana Technical College
1101 Bertrand Drive
Lafayette, LA 70506-4909
(337) 262-1251 or 1252
www.theltc.net

Directory

VISITING COLLEGES

It is a good idea to visit each college that you are considering. Tour the campus, attend an activity, but most importantly, talk with students. The admissions office at most universities can arrange a visit for you. Remember, you are not only choosing a place to go to school, but a home for the next four years. Several colleges host “Senior Day” on their campus. Visit their websites to learn more about these activities.

Questions to ask during your visit:

- Are there adequate facilities for the department of your major interest?
- What is the class size?
- How near is the campus to the local community?
- Is the campus clean and orderly?
- What are the dormitories like?
- Where do students dine? What about meal tickets?
- Are there fraternity/sorority houses? What percent of students belong?
- Are there religious organizations to suit your purposes?
- How are the athletic facilities?
- What are the financial aid opportunities?
- What clubs and student groups are available?
- What are the traditions of the college?
- What percentage of the freshman class graduates in four years?





ADMISSION REQUIREMENTS

UL-Lafayette Admission Requirements

If you graduated from a high school in Louisiana and you're applying as a freshman, you must meet the requirements:

- Complete Louisiana Board of Regents Core 4 Curriculum (19 units) with a 2.5 Core GPA. This core GPA requirement is waived if you have a 23 ACT Composite or 1130 SAT Composite
- 18 ACT English/500 SAT Evidence-Based Reading & Writing/ 250 Accuplacer Writing *see exception
- 19 ACT Math/ 510 SAT Math/ 250 Accuplacer QAS Math or 3.0 Overall high school GPA (unweighted) *see exception

*Any student with a 3.0 Overall cumulative high school GPA does not need to meet the above ACT requirement and is guaranteed admission.

Any student with an ACT composite of 23 does not need to meet the 2.5 Core GPA requirement.

Any student with less than a 2.0 gpa will not be admitted.

Admission by Committee

Students who do not meet the criteria for Guaranteed Admission will be considered individually for Admission by Committee. Admission by Committee is by invitation only. Eligible applicants will be contacted directly by the Office of Admissions after application to the university.

Scholarships

All students who apply to UL-Lafayette will be considered for a scholarship.

- GPA 3.0 or higher
- ACT Superscore will be considered 23 or higher

FOR MORE INFORMATION

CLICK HERE





ADMISSION REQUIREMENTS

LSU admissions has taken a holistic approach. This means that every student who applies will be considered. Students who meet the following criteria should have guaranteed admission once all application requirements are received.

LSU Admitted Profile

Middle 50%

- ACT 23-29 (26 Average)
- GPA 3.5-4.0 (3.79 Average)

To apply to LSU students must complete the **Common Application**. A letter of recommendation is required for all students. Students will only use the Common Application to submit their application and invite their counselor (Anna Proctor) to their application. Students will login to Scoir to request teacher recommendations. All required documents to support their application will be sent through Scoir.

*LSU is test optional – work with your counselor to determine where to submit your score.

LSU does not require completion of the writing section on the ACT or SAT for general admission. However, students interested in being considered for admission to the LSU Honors College must submit writing scores.

Students not meeting the above requirements for automatic admission are still encouraged to apply. We can take other factors into account to predict your potential for success at LSU. Some of these factors may include: choice of degree program, rank in class, credit in advanced placement or honors courses, rigor of the high school curriculum, grade trends, extracurricular activities, and letters of recommendation. If you would like to appeal a decision, please contact our staff. We want to work with you to do everything possible to see you become part of the LSU family.

Scholarships

All students who apply by December 15th, will be considered for a scholarship.

FOR MORE INFORMATION

CLICK HERE



HOW DO COLLEGES MAKE ADMISSIONS DECISIONS?

Each school's admissions committee weighs these components to meet its individual admissions criteria based on the school's mission statement.

ACADEMIC COMPONENTS

- High school course selections
- GPA
- SAT and/or ACT (with writing)

DEMONSTRATED INTEREST

- According to a NACAC study, about 50% of colleges claim that a student's demonstrated interest in the school is either highly or moderately important in the admissions process.
- Students should only contact the college or university when they have a legitimate reason to do so.
- Parents should not be more memorable than students.

PERSONAL COMPONENTS

Personal Achievement

- Extracurricular activities
- Awards
- Employment
- Community service
- Athletics
- Special talents and interests

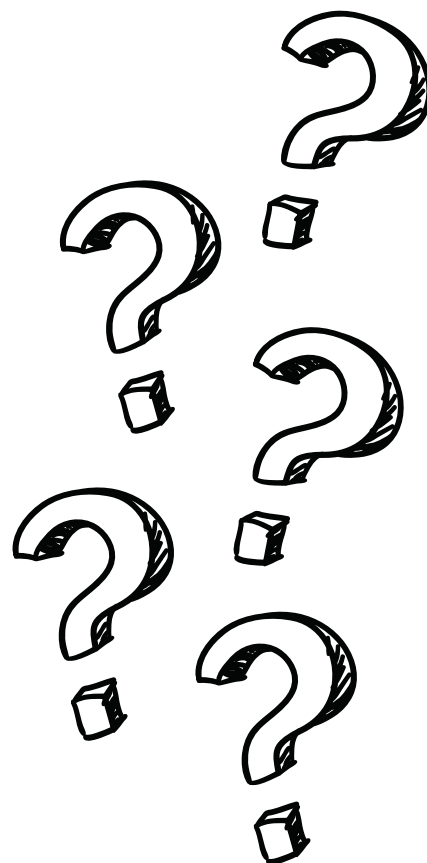
Essay(s)*

- Should be well-written
- Should be interesting
- Reflection of an applicant
- Revealing a passion

Recommendation(s)*

- Provide personal insight into applicant
- Separate(s) applicant from other candidates
- Add(s) new information about the candidate

*Not all schools require essays or recommendations.



WHICH WAY TO

APPLY



EARLY ACTION (EA) I AND II In this non-binding application program, a student usually applies EA I on or before the first of November (sometimes Nov. 15) and receives an admission decision by the middle of December. If accepted, the student is not obligated to commit to the college until the mandatory May 1 “college deadline day.” EA II is a second chance to apply early at the beginning or middle of January, with a response back from a college sometime four, six, eight weeks out. Early Action colleges usually allow students to apply to other EA schools.

EARLY DECISION (ED) I AND II In this binding application program, a student applies on or before Nov. 1 (sometimes Nov. 15) and then receives his or her admission decision by the middle of December. If accepted, the student is obligated to attend that college. (Upon acceptance, a student must withdraw all other applications.) If he/she is not admitted to an ED college, the applicant can then apply ED II to another college with a later deadline. Some Early Decision colleges even allow students to apply to other early application programs, as long as they are not binding, but others don’t. Check this out on the admission section of colleges’ websites. If a student is applying ED, they must complete the STM ED form and turn into the Counseling Office.

REGULAR DECISION (RD) Regular decision is the normal process by which students apply by published deadlines, with promise of receiving an admissions decision no later than April 1 of their senior year.

RESTRICTED EARLY ACTION (or SINGLE-CHOICE EARLY ACTION), (REA) REA is a non-binding early action admission option in which a student may not apply to any other private schools’ early program, except:

- A college outside of the US
- A non-binding rolling admission program
- A public college or university whose admission is not binding
- An ED II program, if notification of admission occurs after January 1 o Like EA applicants, a student has until May 1 to decide if she/he wants to attend the college or university. A few schools that offer REA programs are Boston College, Harvard, Princeton, Stanford, and Yale. Applicants are asked to sign a statement stipulating that they agree to file only one early application.

ROLLING ADMISSION (ROLL) This is an application program at some schools — usually larger public universities — in which complete applications are evaluated as they are received. Applications are accepted until the college fills all of its spaces. There is no limit to the number of Rolling Admissions schools to which you can apply even if you apply to EA, ED or REA colleges.

THE APPLICATION PROCESS



Before a college or university will grant you admission, they want to learn as much about you as possible. Every college has certain admission requirements that you must meet to be accepted. Depending on which schools you are applying to, you will need to submit the following items.

- **First Step** – Review your college choices and plans with your parents and counselor (Scoir). Determine expectations that you and your family have for funding your education.
- **An Application for Admission** – Apply online. See College Directory for website information or search the web. Some colleges use the Common Application (LSU). Once you submit your application, login to SCOIR and move the college to “Applied.” This will notify your counselor.
- **DE Students** – Have your college transcript sent to the college you will attend.
- **ACT or SAT Scores** – When applying to take the ACT or SAT you can request for your scores to be forwarded to any college. If you have not done so, visit their website at www.myact.org and follow the link for sending scores. To register for the ACT go to www.myact.org. You should include the H.S. Code (191-421) and TOPS code (1595) along with any college you choose to send your scores to.
- **Official High School Transcript** – Once you complete and submit your online application, login to your SCOIR account and move the college to the “Applied” column. Your transcript will be sent through SCOIR. If you need to request a copy of your transcript for any other reason, please complete the google form provided in your SCOIR drive. Transcripts are sealed “official” only if we mail it directly from the Guidance Office. All other request are marked “unofficial”. At the end of the school day, stop by the Guidance Office to pick up your transcript.
- **You and One Parent** – create an FSA ID prior to starting your FAFSA.
- **Complete your FAFSA** – December 2024 (FAFSA opens December 1, 2024)
- **Inquire about Scholarships offered by the University/College** – During the admission process, you should also inquire about scholarships from the University. The application should be available online. Watch for deadlines and remember, most colleges will not offer you a scholarship if you have not applied for admission.

APPLY NOW



WHO DOES WHAT?

Seniors Must . . .

- Take ownership of the college application process.
- Take the initiative to research and apply to schools you would like to attend.
- Fill out applications carefully and have College Counseling check over forms, essays and résumé before submitting.
- Request transcripts and recommendations in an appropriate, timely and gracious manner.
- Check with colleges to confirm that your file is complete well before the deadlines.
- Check e-mail, SCOIR, and listen to announcements for important information regarding applications, scholarships, and college representative visits. Scholarship opportunities and important resources will be added to your Scoir drive. Check this often.

College Counselor will . . .

- Help the student navigate and complete the application process.
- Make recommendations for appropriate schools.
- Provide information on colleges, standardized tests, and financial aid.
- Review application forms, essays and résumés if student request their assistance.
- Complete and send in all requisite supporting materials.
- Send official transcript to colleges at the student's request.

Parents should . . .

- Be supportive.
- Encourage your student to research and explore several college paths.
- Take your student to visit schools.
- Set clear and consistent parameters for schools to which your child may apply.
- Allow your child to do the work of applying.





USING SCOIR

CLICK HERE TO

Log in

TO SCOIR

Student Access

- Students were emailed a link to register their account during at the start of their junior year. If a student does not have a registration link, please email Ms. Proctor

Getting Started with SCOIR

This guide provides tips and tools so you can begin using Scoir with confidence. Scoir will help you stay connected with your counselor and prepare you for the college search process and beyond! To begin and make the most out of Scoir, follow the below steps:

1. Build your Profile. Toggle to 'My Profile' and make sure your personal details and academic overview are accurate. Add your activities, achievements, and a personal bio. This may help you establish an approach to your college applications, remind you what sets you apart from others, and make it easier to transfer information over to your college application. Keep this information up-to-date so you can use the Scoir resume template when needed! The more information you enter into Scoir, the better your Counselor will be able to support you throughout the college search process.
2. Explore, follow, and compare Colleges. Go to the 'College Search' tab and complete a Preference and Advanced Search. After you complete a search, explore colleges of interest and take advantage of the virtual tours, college wall, and college details to gain insight into each campus. Don't forget to use Scoir's College Compare tool to compare up to 4 colleges side-by-side.
3. Add Colleges to your My Colleges List. To keep track of colleges that interest you, make sure to follow them and add them to your 'My Colleges' list. You can access this list at any time.
4. The Teurlings Catholic Guidance Department uses Scoir to send application-related documents to colleges. The Guidance Department will receive a notification when a senior moves their college to the "Applied" column in Scoir. At this point the required documents will be sent to the college.



SCHOLARSHIPS



A scholarship is a monetary award granted on the basis of outstanding achievement. Scholarships are typically awarded for achievement in academics, leadership, athletics, community service, student talent, ethnic background, standardized test scores and essay writing ability.

How to obtain information about scholarships:

- Any scholarship information that is received through the guidance office will be announced through Google Classroom and will be posted on the TCHS website. If only a hard copy of the scholarship is available, then students can pick them up in the Guidance Office lobby.
- Scholarship awards are offered directly through the colleges and universities. Each institution has different procedures and requirements. When applying for admission into a school, students should inquire about applying for academic scholarships.

Examples:

- UL-Lafayette: Students who apply for admission to UL Lafayette will be considered for a scholarship. To receive a scholarship, students must have earned a 23 ACT composite by May 31st and have a 3.0 GPA. Students with an ACT of 28 should apply for admission by November 15th for first consideration.
- LSU: Students who apply for admissions into LSU can be considered for a scholarship based on their ACT or SAT score, academic record and other related criteria. To be considered, students must complete and submit an admissions application through the Common Application by December 15th. All students who apply to LSU by this deadline will be considered for a scholarship. No separate application is required.

The following is a list of a scholarships that students can apply for.

- Acadiana Republican Women Scholarship - copies will be available in the Guidance Office lobby or email marsha.vining@yahoo.com.
- AXA Achievement Community Scholarship - [CLICK HERE](#) to download an application. Deadline: February
- Coca Cola Scholarship - [CLICK HERE](#)
- Elks "Most Valuable Student" Scholarship - [CLICK HERE](#) to apply; Deadline: November 13, 2023
- Horatio Alger Scholarship - [CLICK HERE](#) to apply online
- Jon-Cade Clemons Memorial Scholarship - [CLICK HERE](#) for an application
- Louisiana Farm Bureau Foundation Scholarship - A \$2000 scholarship for students pursuing a curriculum in agriculture, vocational agriculture, agribusiness, home economics, or other curriculum directly benefiting the agricultural sector of the state's economy at an accredited four year college. Applications will be available in the Guidance Office Lobby after November 1st.
- SAE Engineering Scholarships - [CLICK HERE](#); Deadline: December 1st
- Sigma Phi Epsilon - The LSU chapter of Sigma Phi Epsilon offers scholarships to three incoming freshmen males each year. Once you have been admitted to LSU, [CLICK HERE](#) and click under Balanced Man Scholarship Link to apply.
- Slemco - All customers will be mailed an application
- St. Martin Parish Land Company Scholarship Fund - St Martin Parish residents can apply for this scholarship valued at \$2500. Forms will be mailed to the guidance office in the spring and will be due in March.
- The Glenn Armentor "Pay It Forward" Scholarship of Excellence - Request an application by emailing the Glenn Armentor Law Firm at Scholarship@GlennArmentor.com. Deadline is March 1st.
- WalMart - [CLICK HERE](#) to apply
- Willis and Mildred Pellerin Foundation Scholarship - Contact: Lynne Hotfelter; Phone: 504 467-9591



SCHOLARSHIPS



Continued....

The following is a list of a scholarships that students can apply for.

- Louisiana Farm Bureau Foundation–applicant’s parents must be members of the Louisiana Farm Bureau Federation. Apply here <https://lafarmbureau.org/foundation>
- Southern University Alumni Federation, Lafayette Metropolitan Chapter– Applicant must attend Southern University, have a minimum 2.5 gpa and possess good citizenship, leadership and a good moral character. Scholarship value: \$1000 Applications will be available in the Guidance Office in early Spring.
- Joseph Henry Tyler, Jr. Chapter of the National Medical Association. \$1000 Scholarship Applications will be available in the Guidance Office this Spring.
- Hagan Scholarship Foundation–This is a need-based scholarship. Gross family income can not exceed \$100,000. Students must have a minimum 3.5 gpa, be accepted and attend a 4-year college, must work 240 hours prior to college graduation (visit www.hsfmo.org for details). Deadline to apply is March 1, 2025. Value \$7500 per semester.
- Alpha Phi Alpha Fraternity, Inc. will be available in the Guidance Office in early Spring. Value \$500.
- Catholic Daughters of the Americas–Seniors, male or female, can apply, must be a St. Bernard Catholic Church Parishioner. Applications will be available in the Guidance Department this Fall. Value: \$200 local \$1000 State Court
- Louisiana Sheriff’s Association Scholarship–application will be available in the Spring
- SWLA Center for Health Services– Any senior planning to pursue a career in the medical field may apply. Visit www.swlahealth.org. Deadline March 15, 2025
- Dudley DeBosier Scholarship–Any senior with a minimum 2.65 gpa can apply. Visit dudleydebosier.com/scholarship Value: \$3500 (\$2500 scholarship plus \$1000 laptop)

SCHOLARSHIP SEARCH SITES

[HTTP://WWW.FASTWEB.COM/](http://www.fastweb.com/)

[HTTP://WWW.COLLEGEBOARD.ORG/](http://www.collegeboard.org/)

[HTTP://WWW.NICHE.COM/](http://www.niche.com/)

[HTTP://WWW.SCHOLARSHIPS.COM/](http://www.scholarships.com/)

[HTTP://WWW.CAPDEX.COM/](http://www.capdex.com/)

[HTTP://WWW.UNIGO.COM](http://www.unigo.com)

[HTTP://WWW.SCHOLARSHIPMONKEY.COM/](http://www.scholarshipmonkey.com/)

FINANCIAL AID

Financial Aid is the term used to describe the various options available to help students and their families finance a college education. A Financial Aid package is the combination of funds needed to make up the difference between a college's cost and the amount you and your family can afford. This package may include grants, low interest loans, and work/study funds.

Colleges and universities across the nation have agreed on how to determine what you and your family can reasonably afford to pay for your education. The (FAFSA) Free Application for Federal Student Aid is completed by you and your parents. Information about your families' financial situation will be requested. The forms are sent to a processing center where it is determined how much your family can contribute toward your education. Your information will be sent to the Louisiana State Office where you may be eligible for programs offered by the state, including TOPS.

The college you are considering will then determine both your financial need and how to close the gap between its total cost and your family contribution.

NEW THIS YEAR:

Before students and parents can complete a FAFSA application, you must first create a FSA ID. Both the student and parents must have a FSA ID.

Students apply online for the FAFSA at
www.fafsa.ed.gov.

Seniors can begin their FAFSA application
December 1, 2024

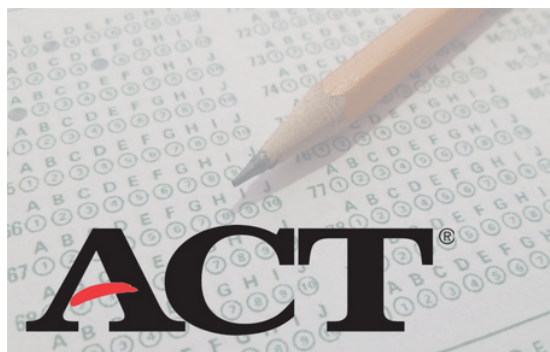


STANDARDIZED TESTING

The American College Testing Program (ACT) and the Scholastic Aptitude Test provide colleges with a common measure of student's abilities. Taking these exams is the initial step in the college application process. Most students will have taken the ACT or SAT at least once prior to their senior year. I recommend that seniors take the ACT or SAT during early fall and continue to take it until they are satisfied. There are courses, books, and software available to assist in preparing students for the exams. More information can be obtained from the guidance office. Remember that Teurlings Catholic High School is a testing center. Testing is available on our campus for the October, February and April test dates.

Test taking tips:

- Awake early on the day of the test so that you will have ample time to dress, eat, and get to the test center in a leisurely manner.
- Eat a good breakfast.
- Bring along the following items:
 - Your test center admission ticket with photo uploaded
 - Your driver's license or school I.D.
 - #2 pencils
 - A calculator (refer to ACT regulations)
 - A watch so that you can pace yourself
 - A snack to eat at break
- Arrive at least 30 minutes before the examination is scheduled to begin.



Click Here



Click Here

TUITION OPPORTUNITY PROGRAM FOR STUDENTS



What is TOPS?

- TOPS is a government funded program based on merit.
- To apply for TOPS you must file a FAFSA (Free Application for Federal Student Aid) by the deadline of the year the student graduates from high school. The FAFSA opens for 2025 graduates on (TBD). Deadline: July 1, 2025
- If a student leaves the state to attend college, then returns to Louisiana to attend college TOPS will pay for the remaining semesters only.

**Students in the military should still apply the year of their graduation. TOPS will honor their award once they complete their military duty.*

Award Categories:

- Opportunity Award – ACT 20 ; 2.5 core GPA based on TOPS core curriculum
- Performance Award – ACT 23; 3.25 core GPA based on TOPS core curriculum
- Honors Award – ACT 27; 3.50 core GPA based on TOPS core curriculum
- Tech Award – ACT 17, 18, OR 19; 2.5 core GPA based on TOPS core curriculum

How to apply for TOPS:

- Complete a FAFSA application online by July 1st of the year you graduate from high school. Students can begin their FAFSA beginning December 1, 2024. Remember, this is a financial aid application for college students, but the Louisiana Government uses this form as their TOPS application. By completing the FAFSA form, the Louisiana Government can determine what year of college you are entering, if you qualify for a grant (free college money) and if you qualify for TOPS. The Louisiana Office of Student Financial Assistance (LOSFA) will connect your FAFSA form, with your ACT score and your GPA provided by your high school.
- FAFSA application website: www.fafsa.ed.gov

LOSFA (Louisiana Office of Student Financial Assistance)

- Create a student hub account to track your TOPS. Use the (LASECID – your social security number). Do not use (LOSFAID).
- www.osfa.la.gov
- Phone: 225-219-1012

PROSPECTIVE COLLEGE ATHLETES

NCAA ELIGIBILITY CENTER



Follow these steps to register with the NCAA Eligibility Center

1. **Do NOT** complete until after sophomore year.
2. Go to www.eligibilitycenter.org
3. You will see a window **“NCAA College-Bound Student Athletes Enter Here”**
4. Create an account.
5. Go to **“Welcome to the NCAA Eligibility Center.”** You will see instructions on an index card.
6. The Guidance Department will upload your transcript once you have registered. Updated transcripts will be sent until your high school transcript is complete.

Remember: You must request transcripts from EACH high school you have attended.

Read more from NCAA Student Guide - [CLICK HERE](#)



QUICK TIPS

TO REMEMBER

SEPTEMBER

- Register to take the ACT test in September or October www.actstudent.org.
- Complete your SCOIR profile. Export your resume in SCOIR and save it in your SCOIR drive.
- Include your High School Code when registering (191-421). Other codes to remember: TOPS-1595, NCAA-9999.
- Check your emails for announcements regarding scholarship opportunities.
- Listen for announcements and check your emails regarding college visits.
- Applying to LSU? Begin now. All students must apply through the Common Application and must submit a letter of recommendation.
- Apply online! Once you apply, login to SCOIR and move college to "Applied."
- Create an FSA ID - you and one parent

OCTOBER

- If you are scheduled to take the ACT or SAT test this month, remember to arrive early enough to check in, get a good nights sleep, eat breakfast, bring (2) #2 pencils and a calculator.
- Include your High School Code on the registration form (191-421). Other codes to remember: TOPS-1595, NCAA-9999.
- Begin working on your admission applications. It is never too early.
- Check for scholarship deadlines.
- Create an FSA ID - you and one parent

NOVEMBER

- Include your High School Code on the registration form (191-421). Other codes to remember: TOPS-1595.
- Check in the guidance office or check your email for any announcements you may have missed.
- Continue working on your admission applications.
- Check for scholarship deadlines. Many deadlines fall during this month. Popular date is November 15, 2023.
- Early action and early decision deadlines - November 1 or 15, 2024.
- Create an FSA ID - you and one parent

DECEMBER

- FAFSA opens December 1, 2024.
- Finalize your admissions application by December 15, 2024.
- LSU Application Deadline is December 15, 2024, (Common App). This deadline is only for students who want to be considered for a scholarship.
- Have your ACT or SAT score sent to the college that you are applying to.
- Once you apply for admission, login to SCOIR and move college to "Applied."
- Watch for scholarship deadlines during this month.

JANUARY

- Does your ACT or SAT score qualify you for TOPS? Make sure your high school code is on the score sheet and that your social security number is correct.
- Complete your college admission application if you have not already done so! Login to SCOIR!
- Have your ACT or SAT score sent to the college that you are applying to.
- Check your email or come by the guidance office for announcements regarding scholarship opportunities.
- Watch for scholarship deadlines during this month. (UL-Lafayette scholarship deadline is January 31st.) To apply simply apply for admission. To be considered you must have earned an ACT composite of 24 and have a 3.0 gpa.



QUICK TIPS

TO REMEMBER

FEBRUARY

- Are you working on your FAFSA? You must complete this application to be eligible for any form of Federal or State financial aid. This includes grants, loans and TOPS. May 1st is the deadline for 1st consideration for TOPS. July 1st is the final deadline. Website www.fafsa.ed.gov
- Does your ACT or SAT score qualify you for TOPS? Make sure your high school code is on the score sheet and that your social security number is correct.
- Submit your admissions application if you have not already done so or apply online. Login to SCOIR.
- Have your ACT or SAT score sent to the college that you are applying to.

MARCH

- Once you have applied to a college and have been accepted, you should receive correspondence from that college. Watch for orientation dates to register for you fall classes.
- Depending on your ACT score, you may be required to take developmental classes prior to entering college. South Louisiana Community College in Lafayette offers these courses.
- Are you working on your FAFSA? You must complete and mail in this application to be eligible for any form of Federal or State financial aid. This includes grants, loans and TOPS. May 1st is the deadline for 1st consideration for TOPS. July 1st is the final deadline.
- Does your ACT or SAT score qualify you for TOPS? Make sure your high school code is on the score sheet and that your social security number is correct.
- Begin your Senior Profile which includes submitting copies of any scholarships you have received.

APRIL

- Complete your FAFSA.
- Complete your Senior Profile.
- Turn in all Scholarship Offers to the Guidance Office.
- The April ACT test is the last test that can qualify you for TOPS without a penalty. Those who qualify with their June ACT score will be penalized one semester of TOPS money.
- You should begin receiving information regarding orientation and other important information.
- Does your ACT or SAT score qualify you for TOPS? Make sure your high school code is on the score sheet and that your social security number is correct.
- Students that receive scholarship offers need to forward a copy to the guidance office by **Friday, April 1, 2025.**
- Complete your Senior Profile through RenWeb Web Forms. Due on **Friday, April 1, 2025.**



STUDENT RESUME

Student's Full Name
6 Elm Avenue, Stockler, CA 91733
Home: 111.111.1111 Cell: 766.444.4444
petals@flowershop.com

OBJECTIVE

Interested in a paid summer camp working up to 15 hours per week.

EDUCATION

School's name and anticipated graduation date
Senior, GPA 3.84

SCHEDULE

Art, Culture & Foods, Independent Living, Family Advocacy

ACTIVITIES

Rebel Ambassador, Beta Club, School Play Stage Crew

SPECIAL SKILLS & INTERESTS

Love to work with children
Can create attractive posters and flyers using graphic software
Able to follow written instructions
Good with Microsoft Word, Excel, and PowerPoint

VOLUNTEER & COMMUNITY SERVICE

Stockler Recreation Department, City of Stockler Summer 2007
Volunteer Camp Counselor

AWARDS AND HONORS

Honor Roll
All TCHS
Religion Award

GOALS

Planning to study Psychology or Music as a major in college
Join the Pep Squad in Junior year